

1. OBTAINING AND INSTALLING XP FORCE

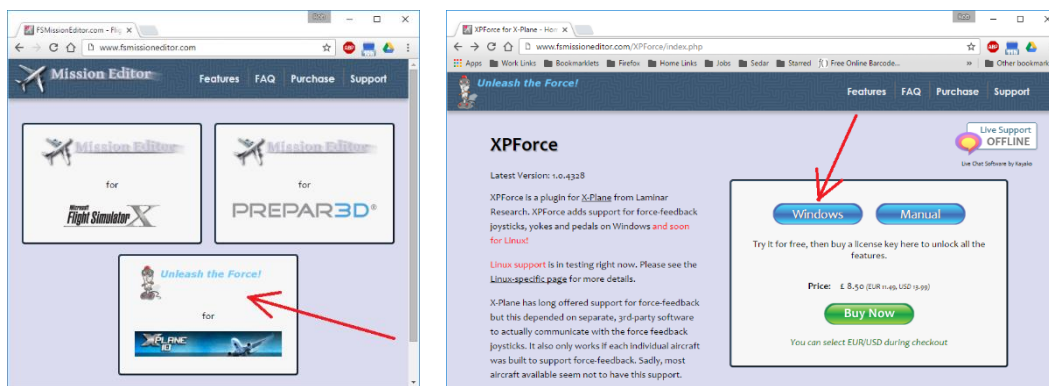
1.1. Prerequisites

This document assumes that XPlane v10 is installed to the default location, C:\X-Plane 10\.

1.2. Obtain the XPForce driver

Download the XPForce installation files from the FSMissionForce website:

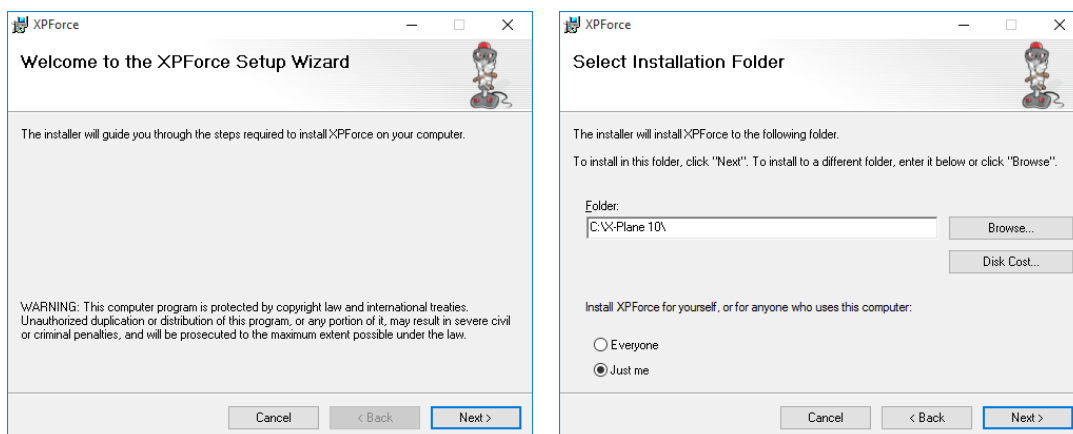
<http://www.fsmissioneditor.com/>

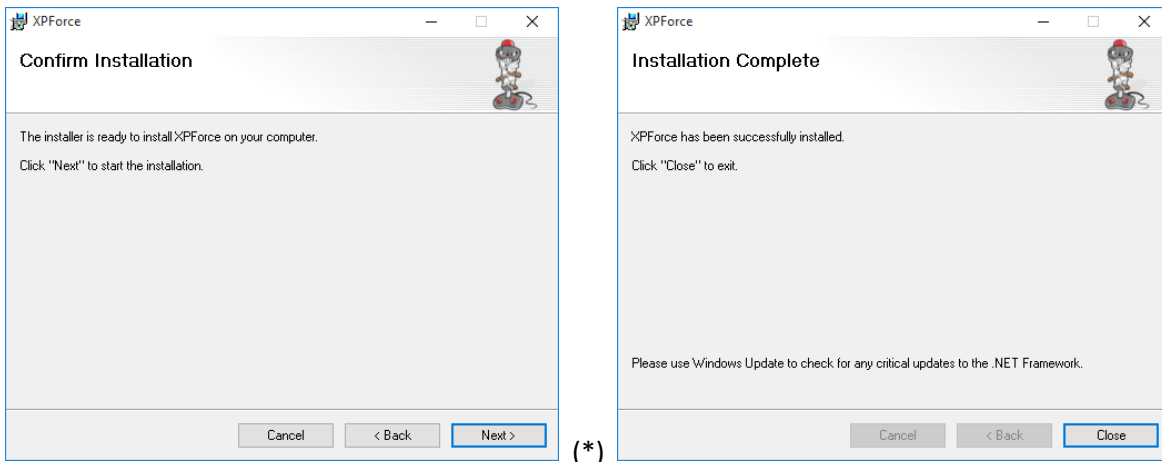


You can save the file to your desktop (Chrome, Firefox) or run it directly from the browser after download (Internet Explorer, Edge).

1.3. Install the XPForce driver

Start the installer and follow the prompts as directed. The installer will attempt to find your X-Plane installation in C:\X-Plane 10\, if yours is installed somewhere else point the installer to the X-Plane 10\ folder in the appropriate location. Choose whether the XPForce drivers should be available for just the current user, or for everyone who uses the computer.





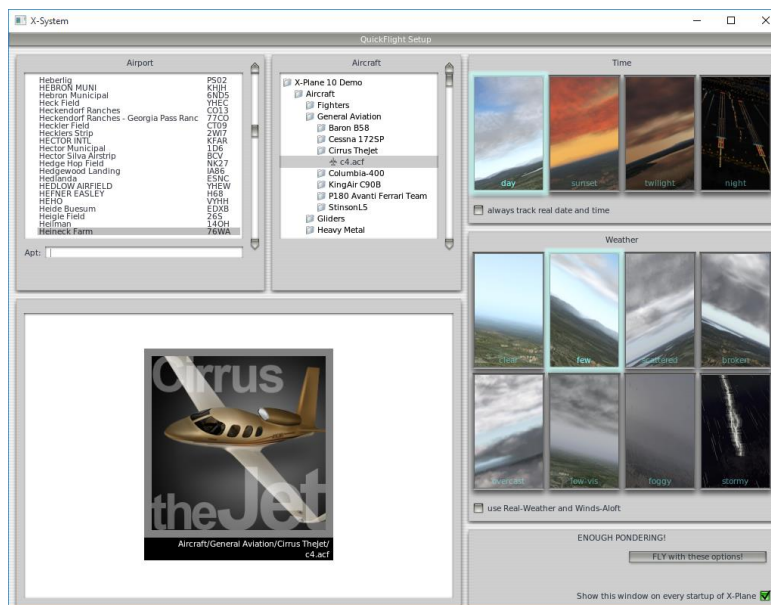
(*) After the “Confirm Installation” screen you may need to confirm that you want the installer to make changes to your computer. Allow the installer to proceed and you will see the “Installation Complete” screen shortly.

If it isn’t already installed, the installer will also prompt to install Microsoft’s .NET framework.

2. SETTING UP XPLANE

2.1. Starting XPlane

Start XPlane by double-clicking on the XPlane icon on your desktop, or by selecting it from the Start or Windows menu. Select an airplane and an environment, and click “Fly with these options.”

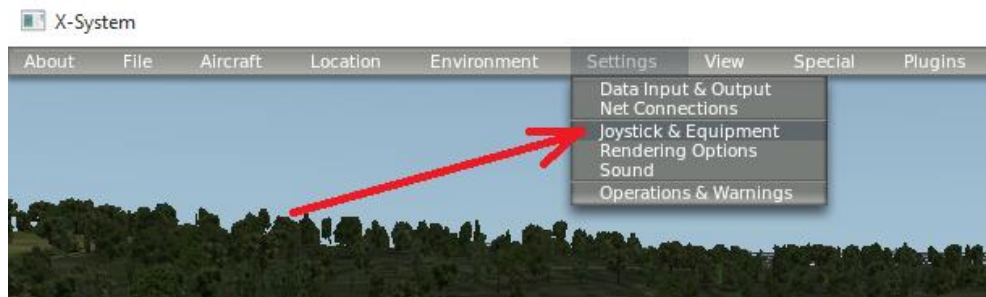


2.2. Configuring the XPForce Plugin

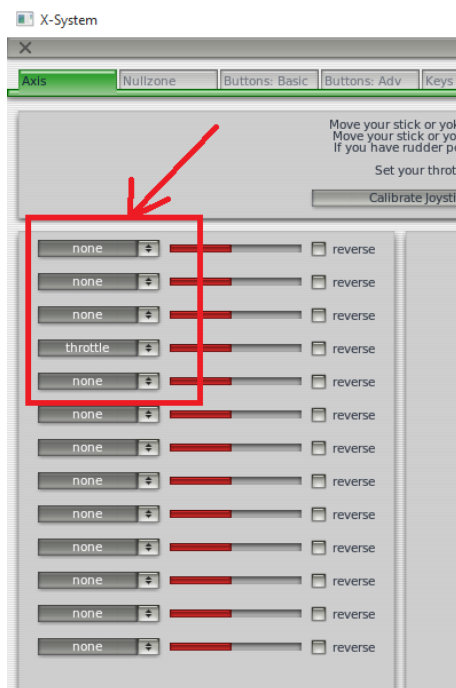
After the startup is finished you will see your aircraft's instrument panel and the view out the front window. You will need to configure the axes that your yoke responds to, and enter the license and configuration settings for XPForce.

Joystick Settings

Go to the Settings menu and select Joystick & Equipment. You will need to hover the mouse pointer near the top of the window to get the window to become visible.



That will open to the Joystick Configuration screen, on the Axis setup page.



Your Dragonfly™ Control Loading Flight Yoke will use two of the axes shown in the list on the left. Those axes will have a green slider bar next to them.

Move the yoke in and out, and watch which green slider bar moves. This is your **Pitch** axis.

Turn the yoke left and right, and watch which green slider moves. This is your **Roll** axis.

Assign the **Pitch** and **Roll** axes as determined above by selecting the appropriate function in the adjacent dropdown menu.

Check the other tabs on this screen and set up any other functions you would like for the yoke. Trim, Throttle, Autopilot Disconnect, and many other functions may be assigned to the buttons on the yoke.

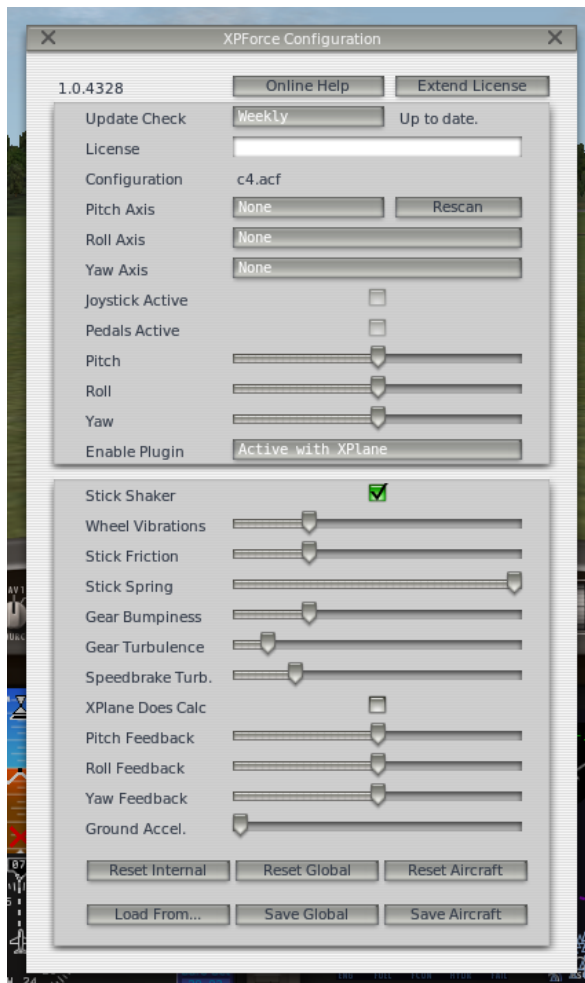
When finished with Joystick settings, close the settings screen by clicking on the “X” under the window title (“X-System”). These settings are retained globally.

XPForce Licensing

Next, Go to the Plugins dropdown menu and select XPForce -> Settings.



That will open to the XPForce Configuration screen:



License: Enter your XPForce license here if you have one. If you do not enter a license, the XPForce enhancements will stop functioning after approximately 10 minutes of run time. You will need to exit XPlane and re-start to reset the timer.

Pitch and Roll will respond as you move your Dragonfly™ yoke through its range of motion.

Enable Plugin lets you know the XPForce plugin is functioning normally.

The lower box displays sliders for tweaking the sensitivity for each effect that XPForce can simulate.

Start with the default values and tweak items individually as needed.

Settings may be saved for later if desired. Click “Save Global” to save these settings for all aircraft, or “Save Aircraft” for the settings to be retained only for the current aircraft.

2.3. Installation is Complete

Your Dragonfly™ Control Loading Flight Yoke is now configured for use with XPlane, and the license and configuration settings should load as defaults the next time you start the program.

3. FOR MORE INFORMATION

Contact XPForce for help with your XPForce Plugin.

<http://www.fsmissioneditor.com/XPForce/faq.php>

Contact XPlane for help with your XPlane Software.

<http://www.x-plane.com/desktop/home/>

Contact Iris Dynamics Ltd. for help with your Dragonfly™ Control Loading Flight Yoke.

<http://www.irisdynamics.com>